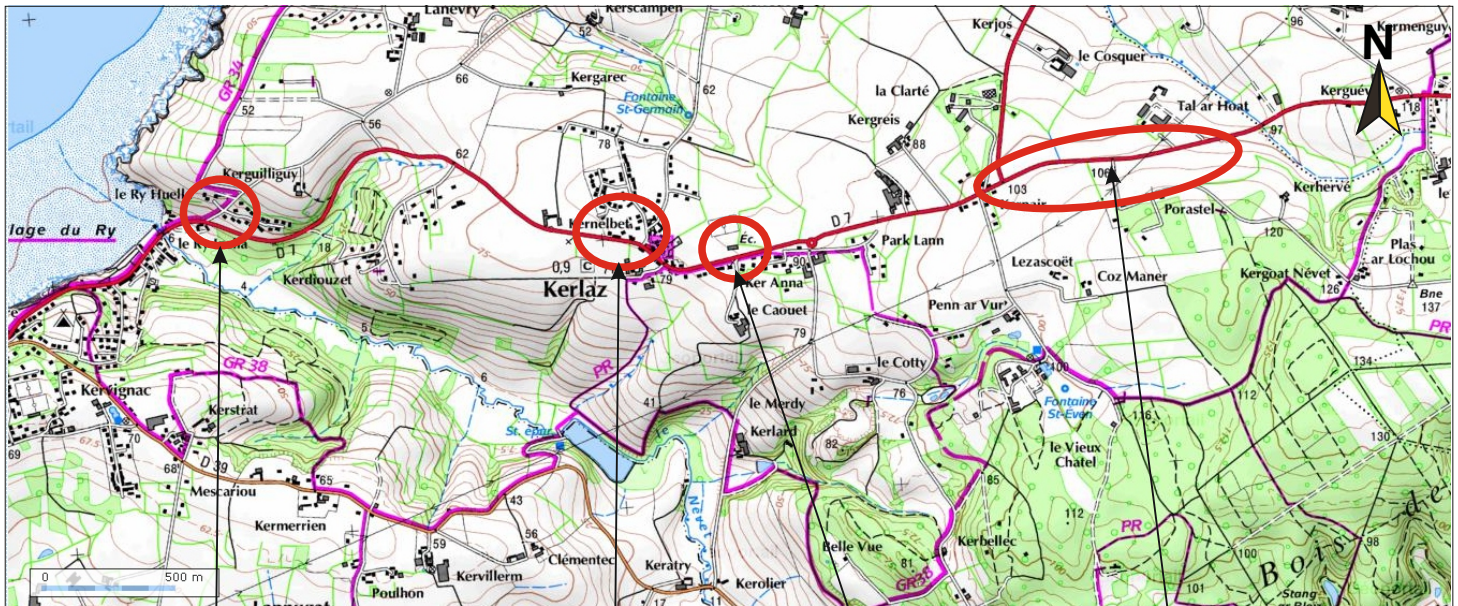
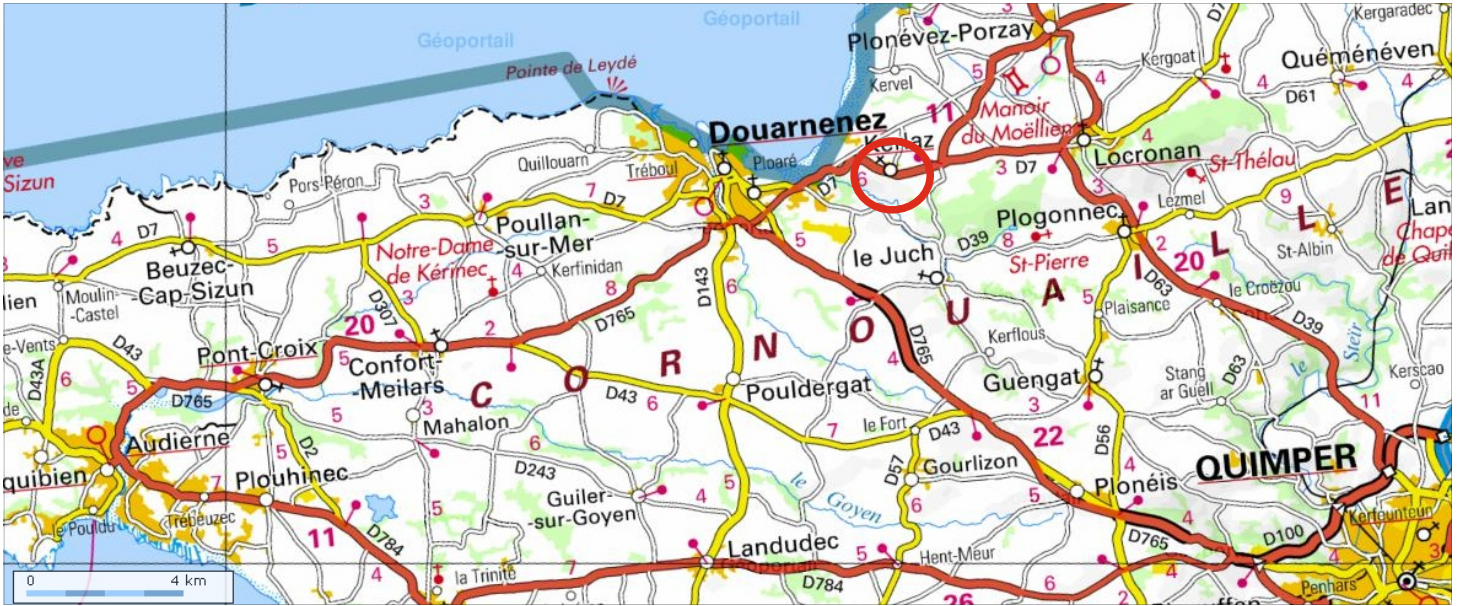


# Plan N°1 : Commune de KERLAZ / Localisation des travaux



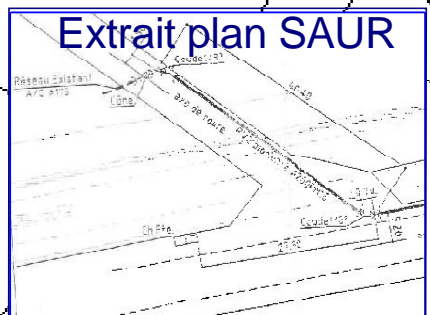
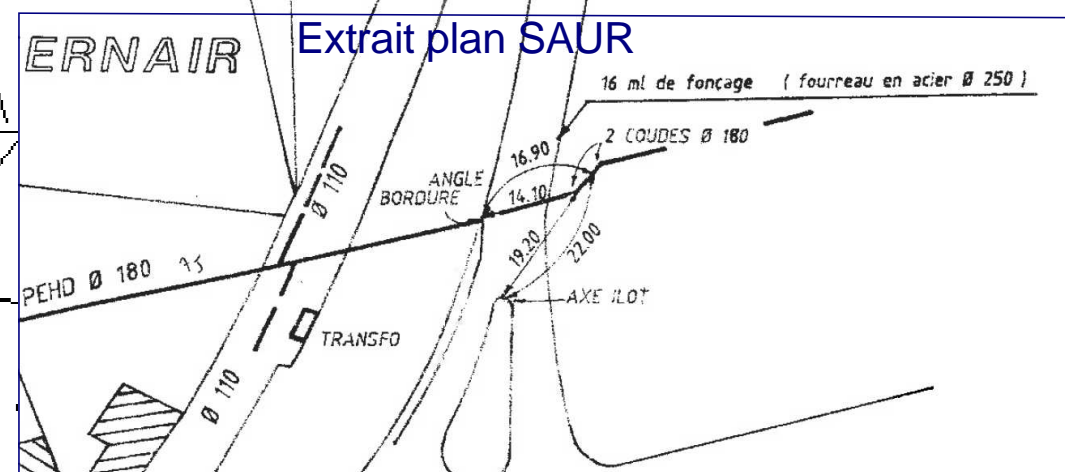
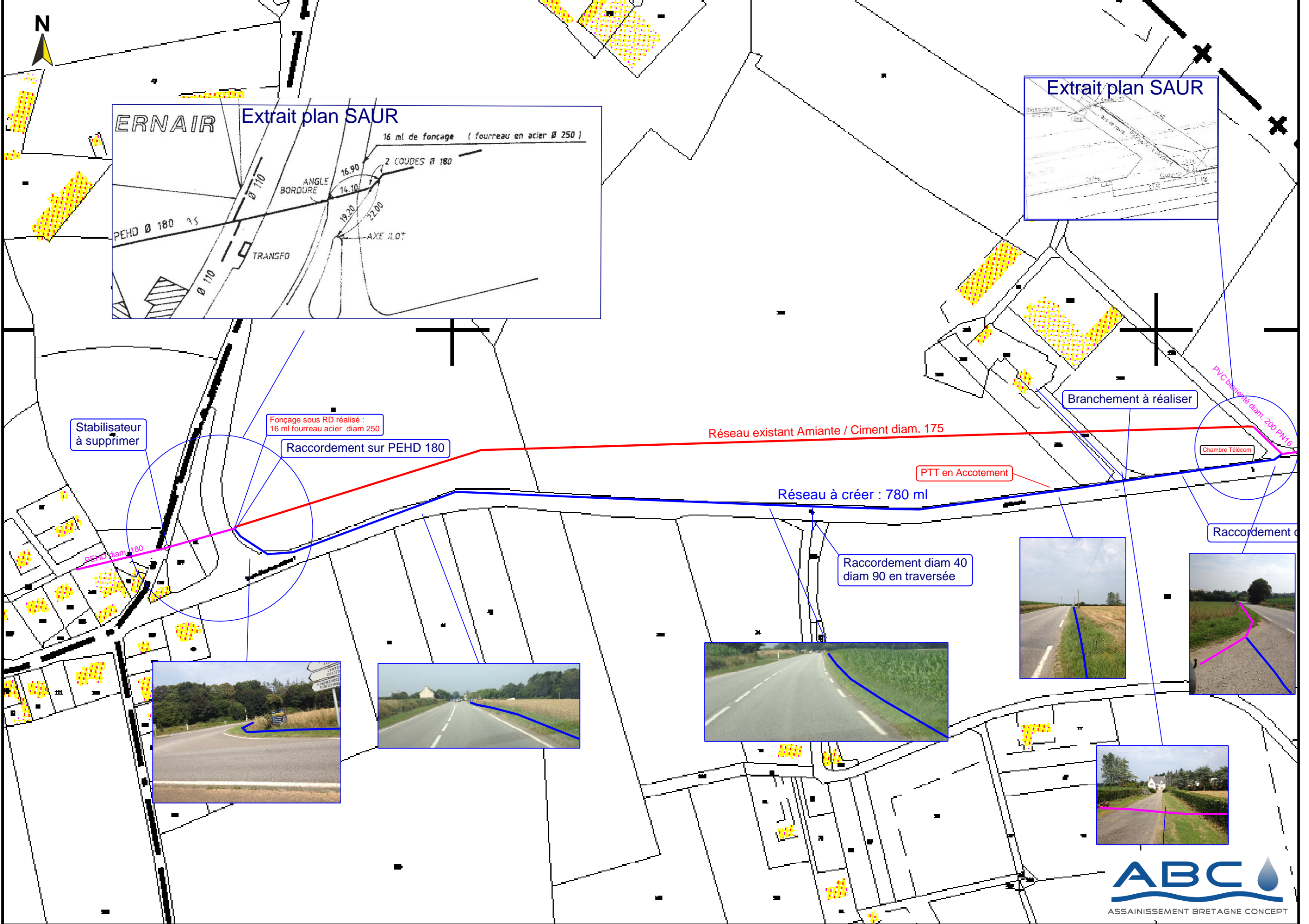
Source géoportail.com

**Kerluca plan n°4/4**

**Terrain de foot plan n°3/4**

**Le Bourg Ouest plan n°3/4**

**Kernair plan n°1/4**



Stabilisateur à supprimer

Fonçage sous RD réalisé : 16 ml fourreau acier diam 250

Raccordement sur PEHD 180

Réseau existant Amiante / Ciment diam. 175

PTT en Accotement

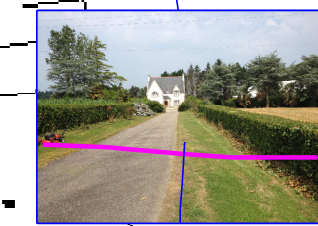
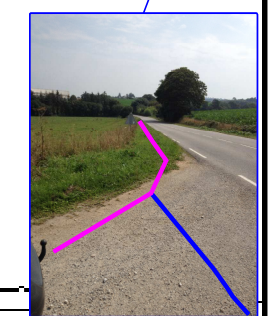
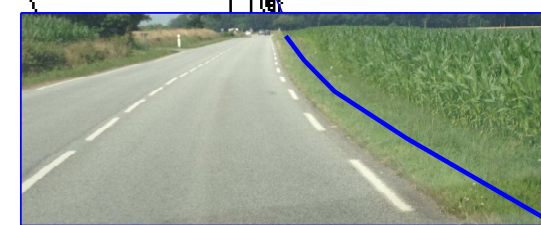
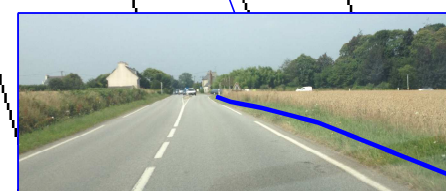
Réseau à créer : 780 ml

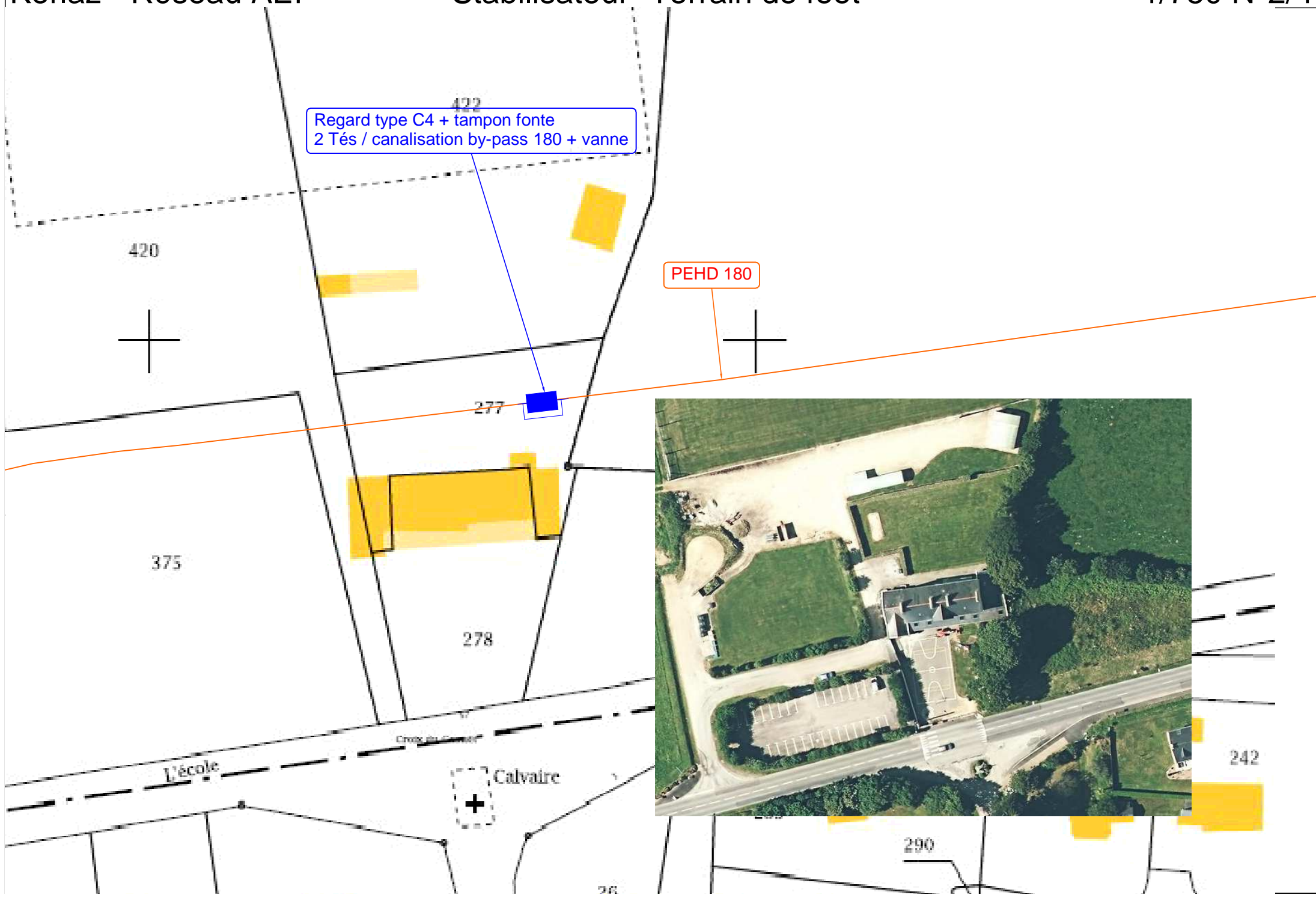
Chambre Télécom

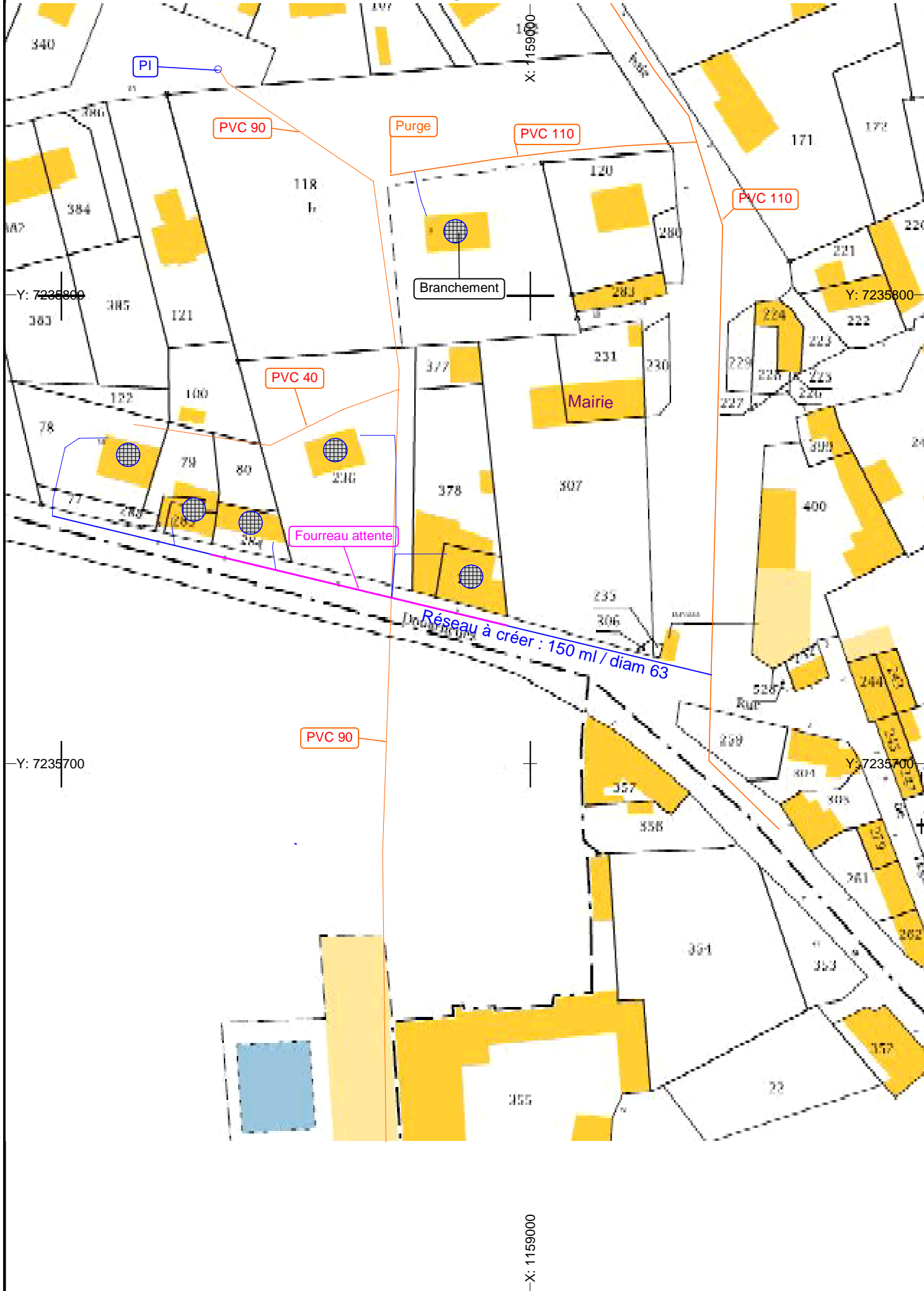
Branchement à réaliser

Raccordement

Raccordement diam 40 diam 90 en traversée







Regard type C4 + tampon fonte  
2 Tés / canalisation by-pass 110 + vanne  
Stabilisateur + boîte à boues

